

# Sardar Patel College of Engineering, Andheri (West), Mumbai, Maharashtra 400058

Report on “Assessment of existing infrastructure and planning for a smart village  
– A case study” under Unnant Maharashtra Abhiyan (UMA)  
(Academic Year: 2018-19)

Name of the UMA/UBA coordinator/Project Guide	<b>Prof. A. R. Kambekar</b> Associate Professor, Civil Engineering (Mobile: 9224306150)
Contact details of the UMA/UBA coordinator	E-mail: <a href="mailto:a_kambekar@spce.ac.in">a_kambekar@spce.ac.in</a> <a href="mailto:arkambekar@gmail.com">arkambekar@gmail.com</a> Phone: 022-26232192 (Ext.: 224) 022-26237819, 022-26289777
Institute website	<a href="http://www.spce.ac.in">www.spce.ac.in</a>

Sardar Patel College of Engineering Andheri (West) Mumbai being a participatory Institute (PI) in Unnant Maharashtra Abhiyan/Unnat Bharat Abhiyan (UMA/UBA) is adopting a cluster of villages namely (1) Dahagaon, (2) Poi, (3) Rohan Antade, (4) Palsoli and (5) Ganeshpuri located in Thane District of Maharashtra State. The team of 01 PG and 10 UG students working under the guidance of Prof. A. R. Kambekar are working on this project. Work has been started with three villages i.e. Dahagaon, Poi and RohanAntade those are around 20 to 25 kM from Kalyan. Dahagaon village is located close to Barvi River. A google map for these three villages is as shown in Fig. 1. The first visit was carried out for reconnaissance survey on 13<sup>th</sup> October 2018 and preliminary observations were carried out. Also meeting with the sarpanch of gram panchayats were organized (Fig. 2). The second visit to the villages were organized on 23<sup>rd</sup> and 24<sup>th</sup> November 2018 (Fig. 3, 4 and 5) to carry out baseline household survey and village survey with questionnaire forms designed under UBA. The numbers of responses recorded are 54 from Dahagaon, 69 from Poi and 30 from RohanAntade.

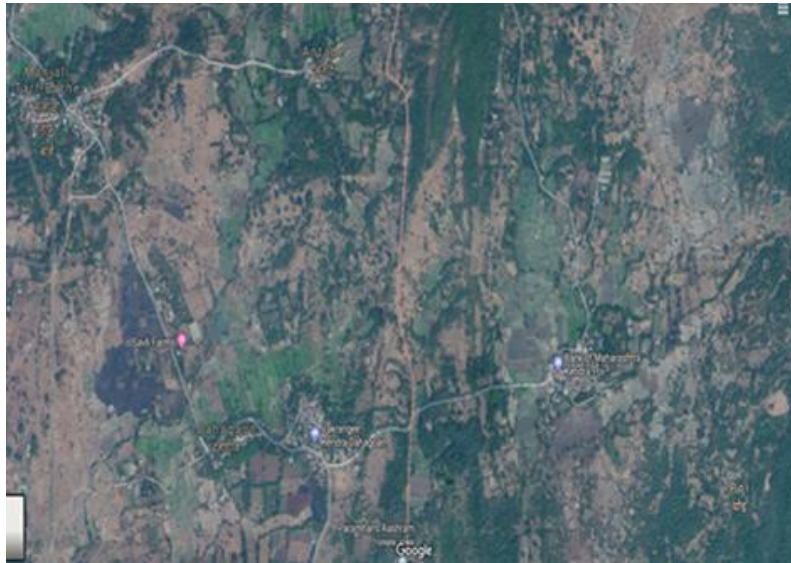


Fig. 1. Aerial view of Area of Study ([www.google.com/maps](http://www.google.com/maps))



Fig 2. Visit of students with sarpanch at Primary School at Dahagaon



Fig 3. Baseline household survey and village survey at Poi village



Fig 4. Baseline household survey and village survey at RohanAntade village



Fig 5. Baseline household survey and village survey at Dahagaon village

Based on the house hold survey and village level survey the following problems were identified as priority issue faced by the villagers as indicated from the survey with the villagers:

- |  |  |
|--|--|
| (1) These villages are provided with tap water but there is absence of water treatment facility for drinking water | (6) Alternative to use of wood and cow dung for domestic fuel purpose      |
| (2) Sewerage system  | (7) only traditional crops   |
| (3) Electricity shortage/Load shedding   | (8) Use of chemical fertilizers, insecticide and weedicides by the farmers |
| (4) Irrigation system  | (9) Low awareness about immunization                                       |
| (5) Need for the Bio-gas plant   |  |

Based on the preliminary survey and as per the request from the villagers the focus on preparation of project report will be basically on; suitable irrigation facility; drinking water facility and bio-gas. The team of SPCE will be arranging meeting with the sarpanch of other gram pachayats for social mobilization through Participatory Rural Appraisal (PRA) process and visit to Palsoli and Ganeshpuri villages are organized.

Prof. A. R. Kambekar,  
 Coordinator UMA/UBA  
 Associate Professor, Civil Engineering,  
 SPCE Andheri (West), Mumbai  
[a\\_kambekar@spce.ac.in](mailto:a_kambekar@spce.ac.in), [arkambekar@gmail.com](mailto:arkambekar@gmail.com),  
 Mobile: 9224306150