

Metric 7.1.2-

The Institution has facilities for alternate sources of energy and energy conservation measures

- 1. Solar energy**
- 2. Biogas plant**
- 3. Wheeling to the Grid**
- 4. Sensor-based energy conservation**
- 5. Use of LED bulbs/ power efficient equipment**
- 6. Wind mill or any other clean green energy**

Findings of DVV-

Geo tagged photographs with caption of the facilities.
Bills for the purchase of equipment for the facilities created under this metric. Any other relevant proof for the selected options. Permission document for connection to the grid from Government / Electricity Board or Authority. In case if documents are in regional language, please provide translated copy in English. Google drive links are not accepted.

Response of HEI-

1) Geo tagged photographs with caption of the facilities are attached. (**Appendix-I**)

Appendix-I



Tel : 91-22-2623 2192
91-22-2628 9777
Fax : 91-22-2623 7819

अमृतं तु विद्या

Bharatiya Vidya Bhavan's Sardar Patel College of Engineering

(Government-Aided Autonomous Institute)

MUNSHI NAGAR, ANDHERI (WEST), MUMBAI - 400 058.



E-mail : principal@spce.ac.in
Web : www.spce.ac.in

Solar energy



 GPS Map Camera



Mumbai, Maharashtra, India
3, Old D N Nagar, Munshi Nagar, Andheri West, Mumbai, Maharashtra 400058, India
Lat 19.123538°
Long 72.836318°
24/07/24 02:15 PM GMT +05:30




I/c. Principal
Bharatiya Vidya Bhavan's
Sardar Patel College of Engineering
(Government Aided Autonomous Institute)
Munshi Nagar, Andheri (W), Mumbai - 58.



Since 1938
Tel : 91-22-2623 2192
91-22-2628 9777
Fax : 91-22-2623 7819

अमृतं तु विद्या

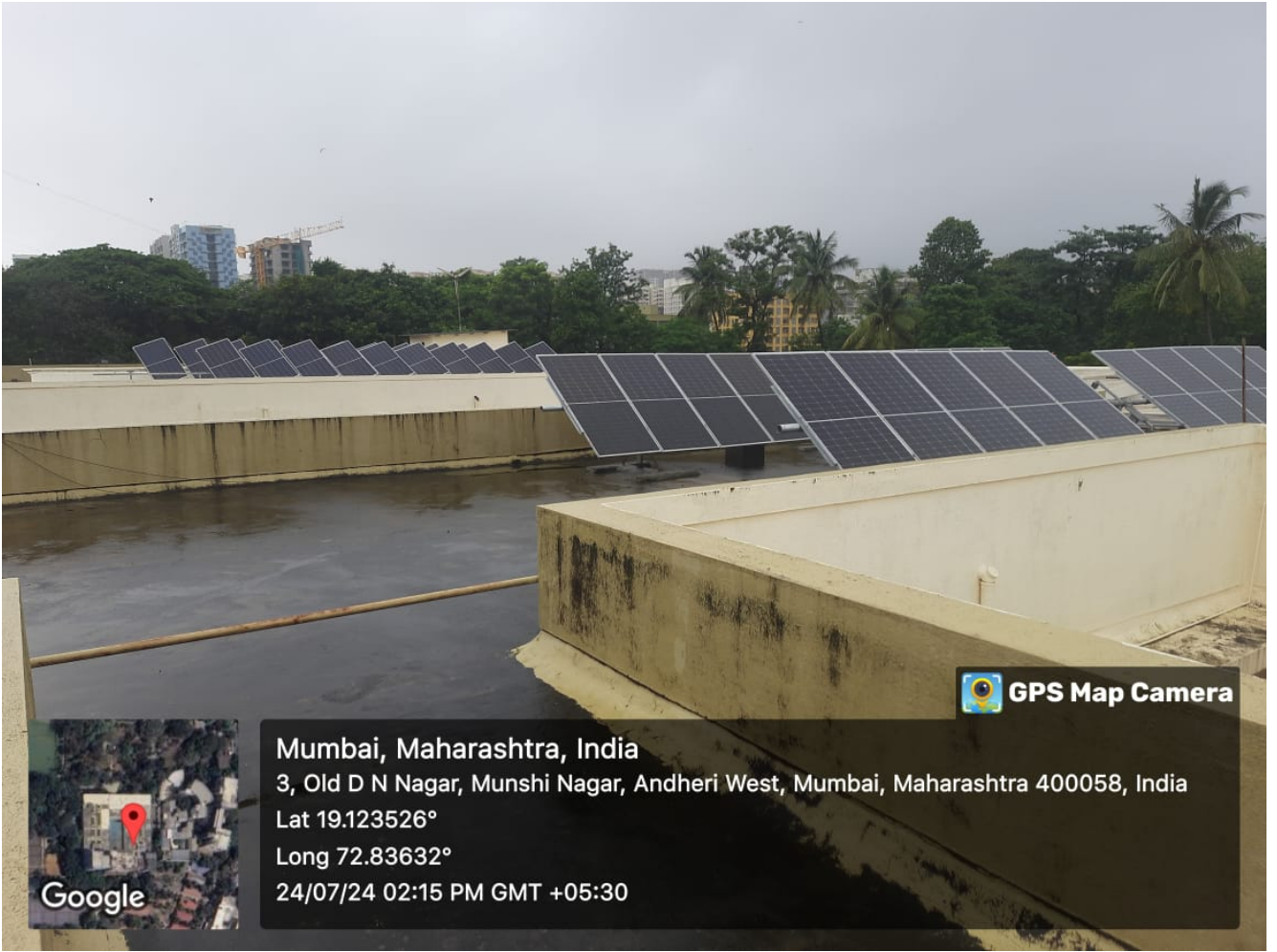
Bharatiya Vidya Bhavan's Sardar Patel College of Engineering

(Government-Aided Autonomous Institute)

MUNSHI NAGAR, ANDHERI (WEST), MUMBAI - 400 058.



E-mail: principal@spce.ac.in
Web : www.spce.ac.in



 GPS Map Camera



Mumbai, Maharashtra, India
3, Old D N Nagar, Munshi Nagar, Andheri West, Mumbai, Maharashtra 400058, India
Lat 19.123526°
Long 72.83632°
24/07/24 02:15 PM GMT +05:30




I/c. Principal
Bharatiya Vidya Bhavan's
Sardar Patel College of Engineering
(Government Aided Autonomous Institute)
Munshi Nagar, Andheri (W), Mumbai - 58.



Tel : 91-22-2623 2192
91-22-2628 9777
Fax : 91-22-2623 7819

अमृतं तु विद्या

Bharatiya Vidya Bhavan's Sardar Patel College of Engineering

(Government-Aided Autonomous Institute)

MUNSHI NAGAR, ANDHERI (WEST), MUMBAI - 400 058.



E-mail : principal@spce.ac.in
Web : www.spce.ac.in

Biogas plant



GPS Map Camera

Mumbai, Maharashtra, India

Lat 19.12364° Long 72.83542°

31/07/24 10:11 AM GMT +05:30



Ans
I/c. Principal
Bharatiya Vidya Bhavan's
Sardar Patel College of Engineering
(Government Aided Autonomous Institute)
Munshi Nagar, Andheri (W), Mumbai - 58.



Tel : 91-22-2623 2192
91-22-2628 9777
Fax : 91-22-2623 7819

ESTD

अमृतं तु विद्या

Bharatiya Vidya Bhavan's Sardar Patel College of Engineering

(Government-Aided Autonomous Institute)

MUNSHI NAGAR, ANDHERI (WEST), MUMBAI - 400 058.



E-mail : principal@spce.ac.in
Web : www.spce.ac.in



Mumbai, Maharashtra, India

Lat 19.123644° Long 72.835337°

31/07/24 10:11 AM GMT +05:30



Handwritten signature
I/c. Principal
Bharatiya Vidya Bhavan's
Sardar Patel College of Engineering
(Government Aided Autonomous Institute)
Munshi Nagar, Andheri (W), Mumbai - 58.



Tel : 91-22-2623 2192
91-22-2628 9777
Fax : 91-22-2623 7819

अमृतं तु विद्या

Bharatiya Vidya Bhavan's Sardar Patel College of Engineering

(Government-Aided Autonomous Institute)

MUNSHI NAGAR, ANDHERI (WEST), MUMBAI - 400 058.



E-mail : principal@spce.ac.in
Web : www.spce.ac.in

Use of LED bulbs/ power efficient equipment



[Signature]
I/c. Principal
Bharatiya Vidya Bhavan's
Sardar Patel College of Engineering
(Government Aided Autonomous Institute)
Munshi Nagar, Andheri (W), Mumbai - 58.



Tel : 91-22-2623 2192
91-22-2628 9777
Fax : 91-22-2623 7819

अमृतं तु विद्या

Bharatiya Vidya Bhavan's Sardar Patel College of Engineering

(Government-Aided Autonomous Institute)

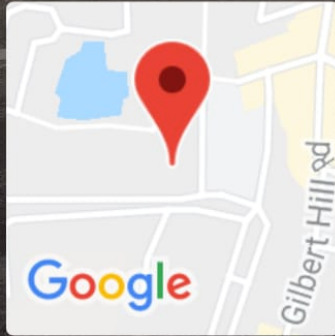
MUNSHI NAGAR, ANDHERI (WEST), MUMBAI - 400 058.



E-mail : principal@spce.ac.in
Web : www.spce.ac.in



GPS Map Camera



Mumbai, Maharashtra, India

c/o Civil Engineering Department, Sardar Patel College of
Engineering, Munshi Nagar, Andheri (W), Old D N Nagar, Munshi
Nagar, Andheri West, Mumbai, Maharashtra 400058, India

Lat 19.123395°

Long 72.836106°

26/01/22 11:20 AM




I/c. Principal
Bharatiya Vidya Bhavan's
Sardar Patel College of Engineering
(Government Aided Autonomous Institute)
Munshi Nagar, Andheri (W), Mumbai - 58.



अमृतं तु विद्या

Bharatiya Vidya Bhavan's Sardar Patel College of Engineering

(Government-Aided Autonomous Institute)

MUNSHI NAGAR, ANDHERI (WEST), MUMBAI - 400 058.



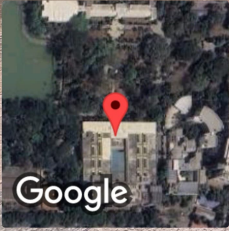
Tel : 91-22-2623 2192
91-22-2628 9777
Fax : 91-22-2623 7819

E-mail principal@spce.ac.in
Web : www.spce.ac.in

Green Campus



 GPS Map Camera



Mumbai, Maharashtra, India

5, Old D N Nagar, Munshi Nagar, Andheri West, Mumbai, Maharashtra 400058, India

Lat 19.123906°

Long 72.836076°

25/07/24 04:57 PM GMT +05:30




I/c. Principal
Bharatiya Vidya Bhavan's
Sardar Patel College of Engineering
(Government Aided Autonomous Institute)
Munshi Nagar, Andheri (W), Mumbai - 58.



Tel : 91-22-2623 2192
91-22-2628 9777
Fax : 91-22-2623 7819

अमृतं तु विद्या Bharatiya Vidya Bhavan's Sardar Patel College of Engineering

(Government-Aided Autonomous Institute)

MUNSHI NAGAR, ANDHERI (WEST), MUMBAI - 400 058.



E-mail : principal@spce.ac.in
Web : www.spce.ac.in

Parking



Mumbai, Maharashtra, India

B24 Andheri Shriramwadi, JP Rd, near Aziza Cycle Store, Old D N Nagar, Munshi Nagar,
Andheri West, Mumbai, Maharashtra 400058, India

Lat 19.123776°

Long 72.835602°

25/07/24 04:59 PM GMT +05:30

Google



h.w.s.
I/c. Principal
Bharatiya Vidya Bhavan's
Sardar Patel College of Engineering
(Government Aided Autonomous Institute)
Munshi Nagar, Andheri (W), Mumbai - 58.



Tel : 91-22-2623 2192
91-22-2628 9777
Fax : 91-22-2623 7819

CS&I
S

अमृतं तु विद्या

Bharatiya Vidya Bhavan's Sardar Patel College of Engineering

(Government-Aided Autonomous Institute)

MUNSHI NAGAR, ANDHERI (WEST), MUMBAI - 400 058.



E-mail: principal@spce.ac.in
Web : www.spce.ac.in

Pedestrian friendly pathway



Mumbai, Maharashtra, India
5, Old D N Nagar, Munshi Nagar, Andheri West, Mumbai, Maharashtra
400058, India
Lat 19.124045°
Long 72.836124°
25/07/24 04:58 PM GMT +05:30

GPS Map Camera




I/c. Principal
Bharatiya Vidya Bhavan's
Sardar Patel College of Engineering
(Government Aided Autonomous Institute)
Munshi Nagar, Andheri (W), Mumbai - 58.



Tel : 91-22-2623 2192
91-22-2628 9777
Fax : 91-22-2623 7819

अमृतं तु विद्या

Bharatiya Vidya Bhavan's Sardar Patel College of Engineering

(Government-Aided Autonomous Institute)

MUNSHI NAGAR, ANDHERI (WEST), MUMBAI - 400 058.



E-mail : principal@spce.ac.in
Web : www.spce.ac.in

Restricted entry of automobile




I/c. Principal
Bharatiya Vidya Bhavan's
Sardar Patel College of Engineering
(Government Aided Autonomous Institute)
Munshi Nagar, Andheri (W), Mumbai - 58.