

## Mandatory Disclosure

<b>Mandatory Disclosure</b>	Updated On December 2012
<b>1. Aicte File No.</b>	740-89-259(E)/Rc/94
<b>Date And Period Of Last Approval</b>	May 2, 2008, Period 2008-2011

<b>2. Name Of The Institute</b>	Sardar Patel College Of Engineering
<b>Address Of The Institute</b>	Munshi Nagar, Bhavan's Campus Andheri (W),
<b>City &amp; Pin Code</b>	Mumbai – 400 058.
<b>State / Ut</b>	Maharashtra
<b>Latitude</b>	NORTH , DEGREE-19,MINUTE-7,SECOND-2
<b>Longitude</b>	EAST, DEGREE-72, MINUTE-48, SECOND-30
<b>Phone Number With Std Code</b>	022-2623 2192, 2628 9777
<b>Fax Number With Std Code</b>	91-22-2623 7819
<b>Office Hours At The Institute</b>	9.45 Am To 5.30 Pm
<b>Academic Hours At The Institute</b>	9.00 Am To 5.00 Pm
<b>E-Mail</b>	<a href="mailto:info@spce.ac.in">info@spce.ac.in</a>
<b>Website</b>	<a href="http://www.spce.ac.in">www.spce.ac.in</a>
<b>Nearest Railway Station (Dist In Km)</b>	Andheri, (2km)
<b>Nearest Airport (Dist In Km)</b>	Chatrapati Shivaji Airport, Santacruz, Mumbai (5 Km)

<b>3. Type Of Institution</b>	Govt. Aided
<b>Category (1) Of The Institution</b>	Non Minority
<b>Category (2) Of The Institution</b>	Co-Ed

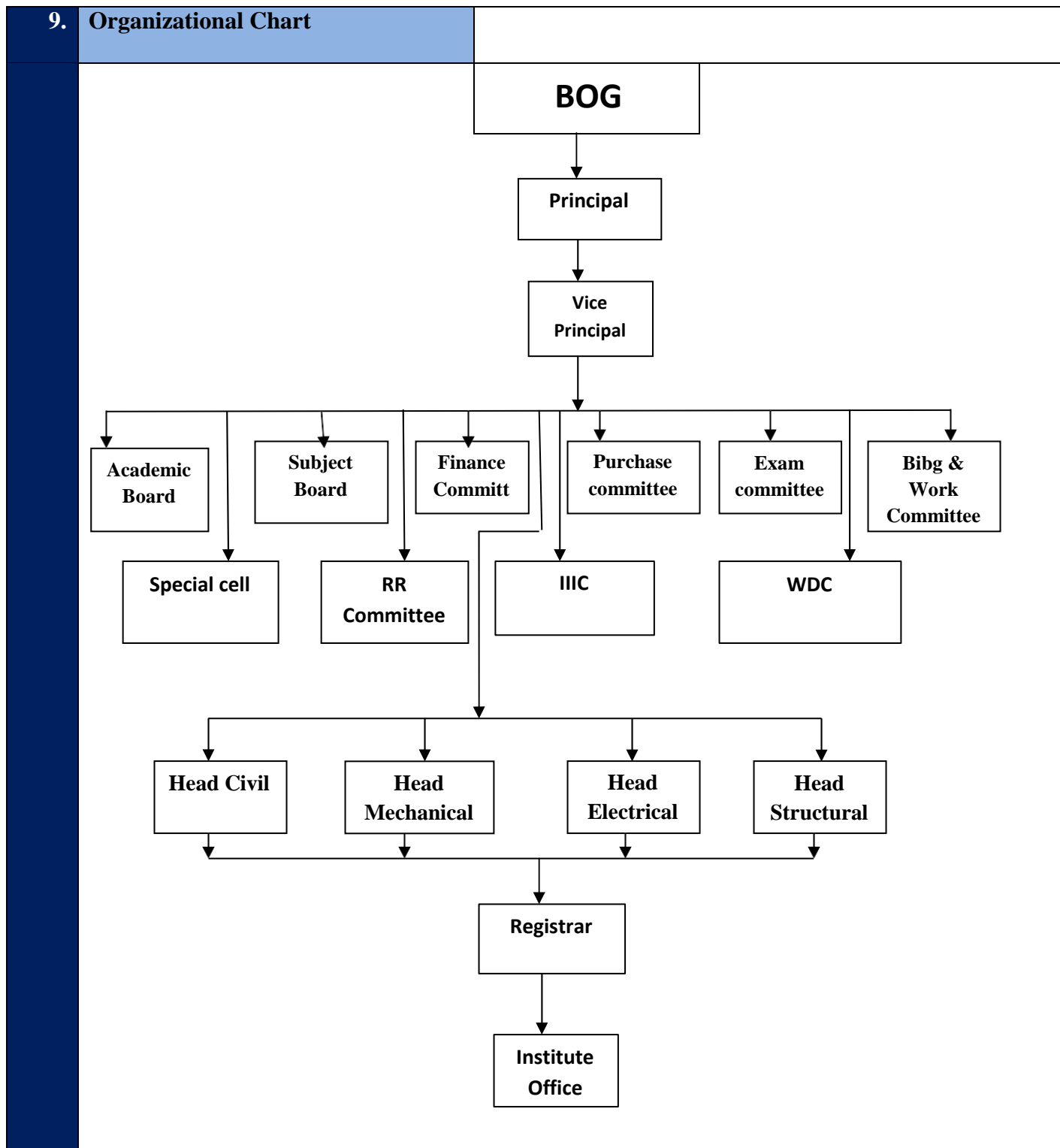
<b>4. Name Of The Organization Running The Institution</b>	Bharatiya Vidya Bhavan
<b>Type Of The Organization</b>	Trust/Registred Society
<b>Address Of The Organization</b>	Dr. Kulapati Munshi Marg, Girgaum Chowpati, Mumbai – 400 007.
<b>Registration Date</b>	21.04.1939
<b>Website Of The Organization</b>	<a href="http://www.bhavans.info/">http://www.bhavans.info/</a>

<b>5.</b>	<b>Name Of The Affiliating University</b>	University Of Mumbai
	<b>Address</b>	Hutatma Chowk, Fort Mumbai – 400 001
	<b>Website</b>	<a href="http://www.mu.ac.in">www.mu.ac.in</a>
	<b>Latest Affiliation Period</b>	Permanent

<b>6.</b>	<b>Name Of Principal / Director</b>	Dr. P. H. Sawant
	<b>Exact Designation</b>	Principal
	<b>Phone Number With Std Code</b>	022-26232192
	<b>Fax Number With Std Code</b>	022-26237819
	<b>E-Mail</b>	<a href="mailto:info@spce.ac.in">info@spce.ac.in</a>
	<b>Highest Degree</b>	Ph.D.
	<b>Field Of Specialization</b>	Civil Engineering

<b>7.</b>	<b>Governing Board Members</b>	
	<b>Name</b>	<b>Designation</b>
	DR. M. L. SHRIKANT	CHAIRMAN
	DR. SESH A IYER	MEMBER
	DR. S. KRISHNAMOORTHY	MEMBER
	PRIN. S. G. CHITALE	MEMBER
	SHRI ASIF MULLA	MEMBER
	DR. ABHAY WAGH	MEMBER
	DR. M .C. DEO	MEMBER
	PROF. M.G. KRISHNA	MEMBER
	DR. A.N. BAMBOLE	MEMBER
	DR.V.R.KALMKAR	MEMBER
	DR. P. H. SAWANT	MEMBER-SECRETARY
<b>Frequency Of Meetings &amp; Date Of Last Meeting</b>	Twice in a Year	

<b>8.</b>	<b>Academic Advisory Body</b>	Steering & Development Committee
	<b>Frequency Of Meeting And Date Of Last Meeting</b>	Once in a three month or as required



<b>10. Student Feedback Mechanism On Institutional Governance/Faculty Performance</b>	Yes, (Students Feedback is taken in every semester)
---	---

<b>11. Grievance Redressal Mechanism For Faculty, Staff And Students</b>	Yes, WDC, LMC, Gymkhana Committee
--	-----------------------------------

<b>12. Course</b>	B.E. Degree (Civil/Mechanical/Electrical) M.E. [Post Graduate] (Civil/Mechanical)
-------------------	--

		Ph.D (Civil, Mechanical)													
<b>Level</b>		UG & PG													
<b>1<sup>st</sup> Year Of Approval By The Council</b>		15/11/1968													
<b>Year Wise Sanctioned Intake</b>		CAY – 60 each, CAY1- 60 each, CAY2-60 each													
<b>Year Wise Actual Admission</b>		Civil				Electrical				Mechanical					
		2012-13		2011-12		2012-13		2011-12		2012-13		2011-12			
<b>Cut Off Marks (General Quota)</b>		<b>2012-13</b>				<b>2011-12</b>				<b>2010-11</b>					
		Highest		Lowest		Highest		Lowest		Highest		Lowest			
Male/Female		M	F	M	F	M	F	M	F	M	F	M	F		
Civil Engg.		176	175	154	154	173	160	135	118	176	175	154	154		
Mech. Engg.		191	191	186	163	185	158	163	129	191	191	186	163		
Elect. Engg.		181	175	166	168	168	161	115	141	181	175	166	168		
<b>% Students Passed With Distinction</b>				2011-12						2010-11					
		Civil Engg.		37						23					
		Mech. Engg.		22						28					
		Elect. Engg.		30						20					
<b>Students Passed With Class</b>				2011-12						2010-11					
		Civil Engg.		36						25					
		Mech. Engg.		34						34					
		Elect. Engg.		22						20					
<b>Student Placed</b>				Civil				Mechanical				Electrical			
		<b>2011-12</b>		52				52				56			
<b>Average Pay Package, Rs./Year</b>				4.00 Lac											
<b>Students Opted For Higher Studies</b>				Civil				Mechanical				Electrical			
		<b>2011-12</b>		18				12				09			
<b>Accreditation Status Of The Course</b>				B.E. (Civil/Mechanical/Electrical):Accredited earlier now Applied for Accreditation.											
<b>Doctoral Courses</b>				Ph.D (Tech) Civil Engg. – 45 Intake, Mech – 30 Intake											
<b>Foreign Collaborations, If Any</b>				MOU's (Proposed For Academic Activities)											
<b>Professional Society Memberships</b>				Yes											

<b>Professional Activities</b>	Yes
<b>Consultancy Activities</b>	Extensively
<b>Departmental Achievements</b>	Excellent
<b>Distinguished Alumni</b>	Active Alumni Association

<b>13. Details Of Teaching Staff</b>	Please Refer Annexure ----
<b>Interaction With Professional Institutions</b>	Yes

<b>14. Admission Quota</b>	Fully on Merit & as Per the government norms			
<b>Entrance Test / Admission Criteria</b>	C.E.T. Of Government Of Maharashtra			
<b>Fees In Rupees</b>				
<b>Number Of Fee Waiver Offered</b>	2012-13	2011-12	2010-11	
	Civil Engg.	03	03	06
	Mechanical Engg.	03	03	06
	Electrical Engg.	03	03	06
<b>Admission Calendar</b>				
<b>Pio Quota</b>	No			

<b>15. Infrastructural Information</b>	Class Rooms	18
	Tutorial Hall	6
	Laboratories	32
	Workshop	5 lab
	Computer Centers	5
	Library	1
	Server Room	1
	Seminal Hall	4
	<b>Classroom/Tutorial Room Facility</b>	Yes
<b>Laboratory Details</b>		
<b>Computer Center Facilities</b>	PC= 120 Laptops= 05 Printers= 10	
<b>Library Facility</b>	Digital Library, Internet Access, Reprographic,	

		Reference Service Book Bank, Institutional Membership, Referral Service, Online Lectures, E- Books, E- Journals	
	<b>Auditorium/Seminar Halls</b>	Open Auditorium = 1 Seminar Halls = 4	
	<b>Cafeteria</b>	Canteen	01
	<b>Indoor Sport Facility</b>	Gymkhana = 1	
	<b>Outdoor Sport Facility</b>	Yes	
	<b>Gymnasium Facility</b>	No	
	<b>Facility For Disables</b>		
	<b>Any Other Facilities</b>		

<b>16.</b>	<b>Boys Hostel</b>	Total Seats = 278	
	<b>Girls Hostel</b>	Total Seats = 67	

<b>17.</b>	<b>Academic Session</b>	July To November & January To May
	<b>Examination System, Year/Semester</b>	Semester Pattern
	<b>Period Of Declaration Of Results</b>	21 Day

<b>18.</b>	<b>Counseling / Mentoring</b>	Yes
	<b>Career Counseling</b>	Training and Placement Cell
	<b>Medical Facilities</b>	Yes
	<b>Student Insurance</b>	Yes

<b>19.</b>	<b>Students Activity Body</b>	Yes
	<b>Cultural Activities</b>	Yes
	<b>Sport Activities</b>	Yes

	<b>Literary Activities</b>	Yes
	<b>Magazine / Newsletter</b>	Yes
	<b>Technical Activities / Tech Fest</b>	Yes
	<b>Industrial Visits / Tours</b>	Yes
	<b>Alumni Activities</b>	Yes

<b>20.</b>	<b>Name Of The Information Officer For Rti</b>	Prof. Rahul Dahatonde
	<b>Designation</b>	Training and Placement Officer
	<b>Phone Number With Std Code</b>	022-26232192
	<b>Fax Number With Std Code</b>	022-26237819
	<b>E-Mail</b>	tpo@spce.ac.in

